



GEW[®] SkyLark-N

Naval communications ESM system

- High-performance HF and V/UHF communications electronic support measures (ESM) system
- Simultaneous monitoring and wideband direction finding
- Signal classification, analysis and data-decoding functions
- 80 MHz instantaneous bandwidth
- Ideal for installation on naval platforms
- Interferometric DF operation

Hensoldt South Africa

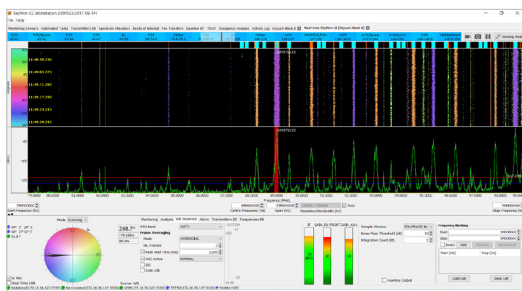
HENSOLDT
Detect and Protect

GEW® SkyLark-N

Naval communications ESM system

Overview

The GEW® SkyLark-N ESM system is a high-performance, state-of-the-art communications surveillance and monitoring system for naval applications. At the system's core is the GEW® MRD7090CE DF, featuring simultaneous wideband direction-finding and monitoring functions complimented with advanced signal classification¹, analysis and data-decoding capabilities. The easy-to-use system and intuitive GEW® SkyMon user-interface guide the operator through ESM operations such as monitoring, emitter tracking and signal analysis.



System applications

The system is ideal for installations in the naval domain. The design is rugged and lightweight, with low power consumption.

Naval platform installations

Designed for naval applications, the SkyLark-N system uses a compact naval qualified interferometric direction-finding and monitoring antenna, which provides the best performance balance between size, sensitivity and accuracy. The antenna is installed in a clear area high up on the vessel's mast.



MRA7037

MAIN SPECIFICATIONS

Frequency range	1 MHz to 3.6 GHz		
Instrumental DF accuracy	≤ 0.5 °RMS		
Installed DF accuracy in reflection free environment	Antenna	HF	V/UHF
		1-20 MHz	20 MHz – 3.6 GHz
Note: DF accuracy influenced by platform installation and mandatory calibration	MRA7037	≤5 °RMS	≤ 2 °RMS
Instantaneous bandwidth	Up to 80 MHz		
Effective DF scan rate	80 GHz/s		
Minimum signal duration	< 550 µsec (GSM burst – Sync)		
Receiver sensitivity (10 dB SNR @ 12.5 kHz BW)	≤ -111 dBm		
Power consumption	< 1250 Watt		
Power supply	220 V AC		
Dimensions (system)	19" x 800mm (high) equipment rack with equipment		
Weight	120 kg (system equipment rack) 90 kg (antenna complete, excluding cabling)		

FEATURES

- › Simultaneous direction finding and monitoring
- › Automatic fixed-frequency detection modes
- › Integrated GPS/GLONASS and compass
- › Able to be networked for automatic emitter location
- › Signal classification, analysis and data decoding functions¹
- › Ideal for naval applications in the security and maritime environments
- › Multi-level BITE

¹With optional GEW® SAS2000 signal classification and data decoding suite